

MONTHLY MEMBERSHIP PROGRESS REPORT

District 5M 9

Results as of: 1/31/2024

GMT:

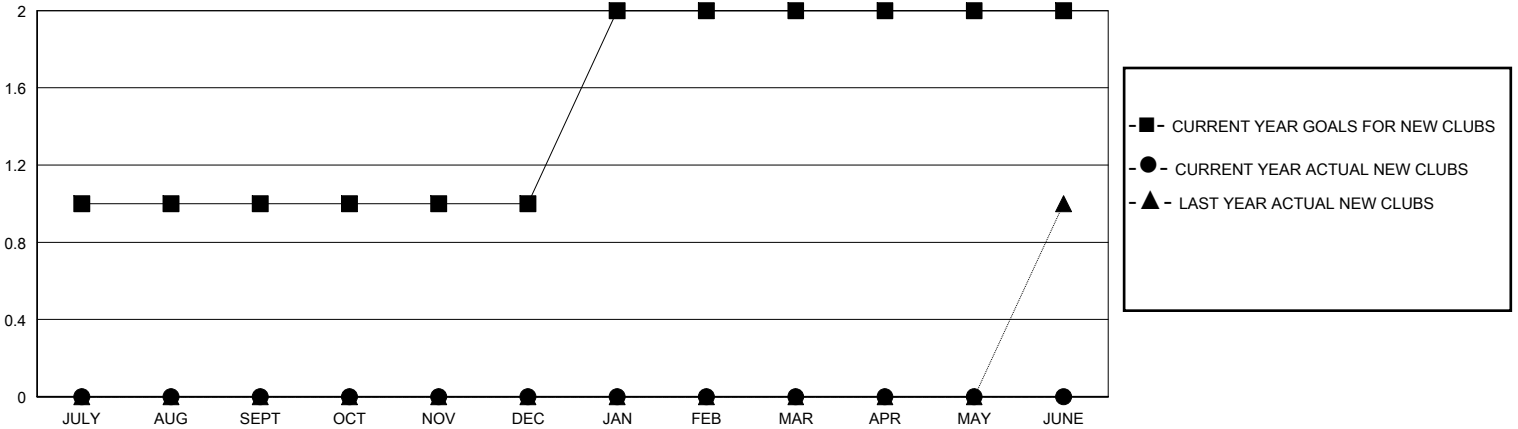
LOCATION MINNESOTA

GMT CA

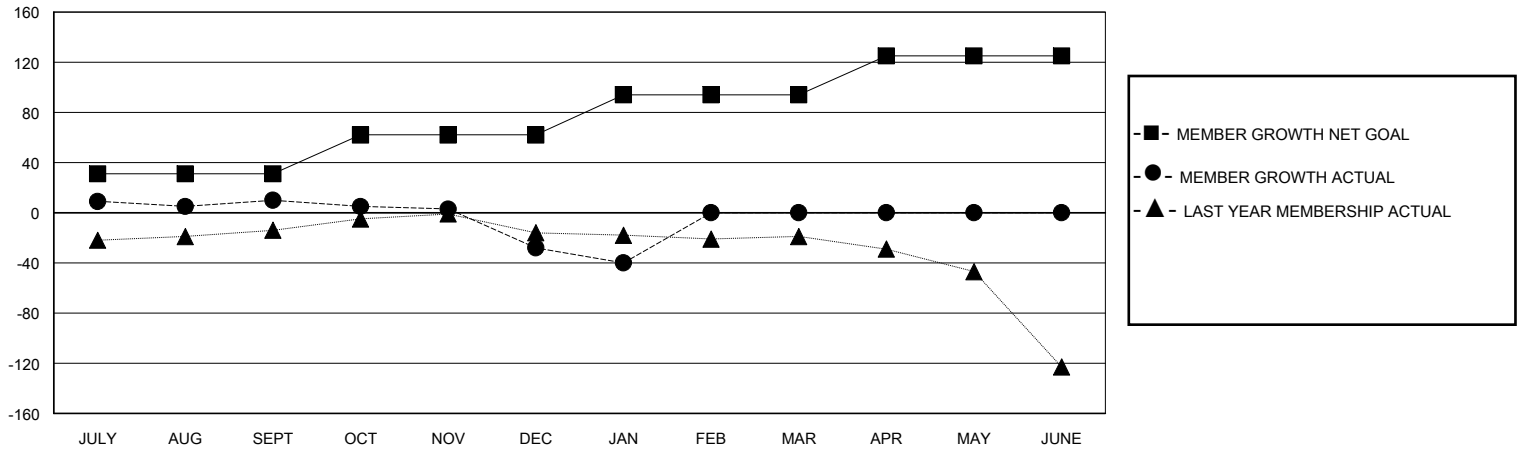
Clubs			
RESULTS FOR 2023-2024			
QUARTER	NEW CLUB GOAL	NEW CLUBS	DROPPED CLUBS
JULY/AUG/SEPT	1	0	0
OCT/NOV/DEC	0	0	0
JAN/FEB/MAR	1	0	0
APR/MAY/JUNE	0	0	0

Members			
RESULTS FOR 2023-2024			
QUARTER	MEMBER GROWTH NET GOAL	MEMBER GROWTH ACTUAL	DROPPED MEMBERS ACTUAL (including transfers)
JULY/AUG/SEPT	31	63	45
OCT/NOV/DEC	31	21	57
JAN/FEB/MAR	32	14	26
APR/MAY/JUNE	31	0	0

GOALS AND ACTUAL NEW CLUBS CUMULATIVE



GOALS AND ACTUAL MEMBERS CUMULATIVE



DROPPED CLUBS: 0	32 CLUBS OF 62 ADDED 1 OR MORE NEW MEMBERS	GENDER DISTRIBUTION MALE 1,147 (59.96%) FEMALE 764 (39.94%)
DROPPED MEMBERS DECEASED 13 CLUB CANCELLED 0 OTHER 115 TOTAL 128	CLICK HERE FOR CUMULATIVE MEMBERSHIP DATA	TOTAL FAMILY UNIT MEMBERS 615 FAMILY MEMBERS PAYING HALF DUES 309